

the bed frame consists of:

- 1x headboard
- 1x footboard
- 2x side rails

the bed frame hardware consists of:

- 8x screws (4 if no drawers)
- 8x 1/2 moon washers (4 if no drawers)
- 8x wooden dowels
- 1x spanner

the flexislat bed kit consists of:

- 1x central rail
- 1x set flexislats
- 1x set shoes

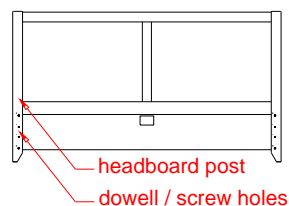
the drawer set-up consists of:

- 4x drawers
- 3x drawer rails
- 2x upright rail supports
- 1x head-foot rail
- 1x packet posi-drive screws

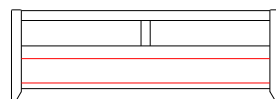
****troubleshooting:**

- if the drawer fronts do not sit flush with the bed side rails, check the drawers are in the correct holes
- alternatively, the drawers may not sit flush if the bed frame is out of square; to remedy this, slide the footboard to the left or right until the drawers sit flush with the bed side rails
- if the drawers are sticking, check they are in the correct holes, check if the bed frame is square, & check the drawer rail alignment (adjustment may be required)

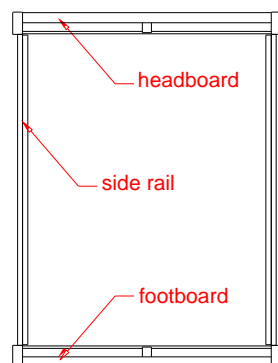
boatbed headboard (inside)



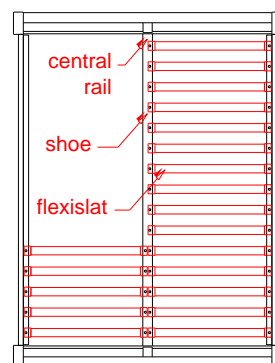
boatbed footboard (outside)



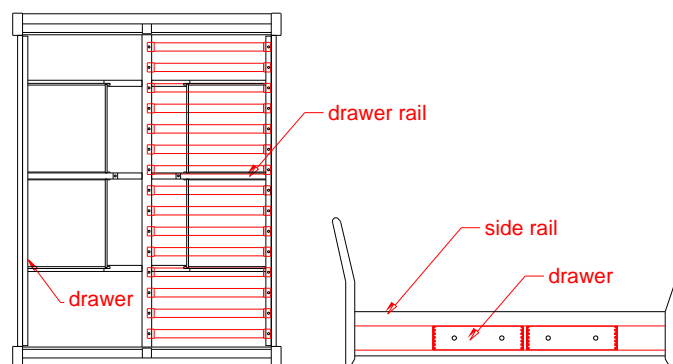
boatbed frame / encasement



boatbed with flexislat base



boatbed with flexislat base & drawers



step 1: to assemble the bed frame (or encasement bed)

- on each post of the headboard there are 4x holes; insert wooden dowels into the top & bottom holes
- fix screws into the middle 2x holes, leaving approximately 55-60mm of the shaft protruding from the post
- the side rail has 4x holes that correspond to the holes in the headboard post; fit a rail end labelled 'HB' to the headboard post
- the 1/2 moon washers fit behind the back of the screw, over its shaft; use the spanner to tighten these
- fit the other rail to the headboard & repeat the procedure to fix the rails to the footboard

step 2: to assemble a boatbed with drawers

(after assembling the bed frame as per step 1)

*(skip step 2 if your bed has no drawers)

- ensure the bed frame is square
- all drawer componentry is pre-assembled & labelled; assemble by following the alphabetic or numeric order, as is labelled on the componentry
- fit in the following sequence; drawer rails, head-foot rail, & upright rail supports
- fit the drawers into their corresponding holes (numbered)

*carry out further assembly instructions as per step 3

step 3: to assemble a boatbed with flexislat base

(after assembling the bed frame (and drawers, if applicable))

- fit the central rail to the bed frame; the end labelled 'HB' to the metal bracket on the headboard, the other to the bracket on the footboard
- fit the flexislat shoes to the central rail
- slide the flexislats into the shoes on the central rail
- slide the remaining shoes onto the outside ends of the flexislats
- fit the outside shoes into the corresponding holes on the bed side rail

*the mattress can now be placed on the bed

ASSEMBLY INSTRUCTIONS FOR BOATBEDS WITH DRAWERS

*note: all boatbeds are pre-assembled